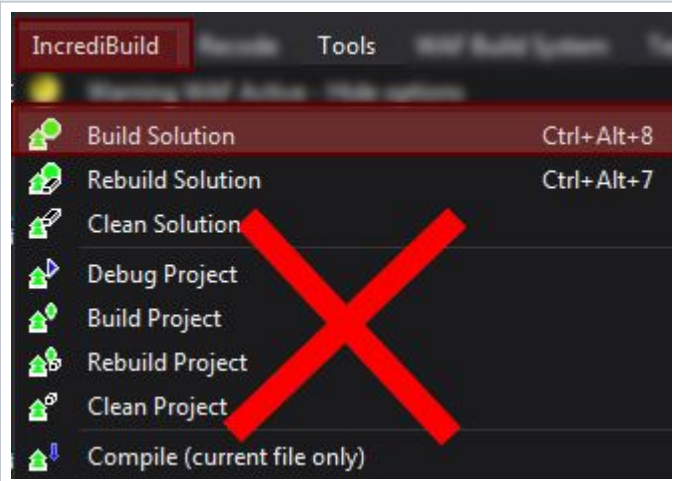
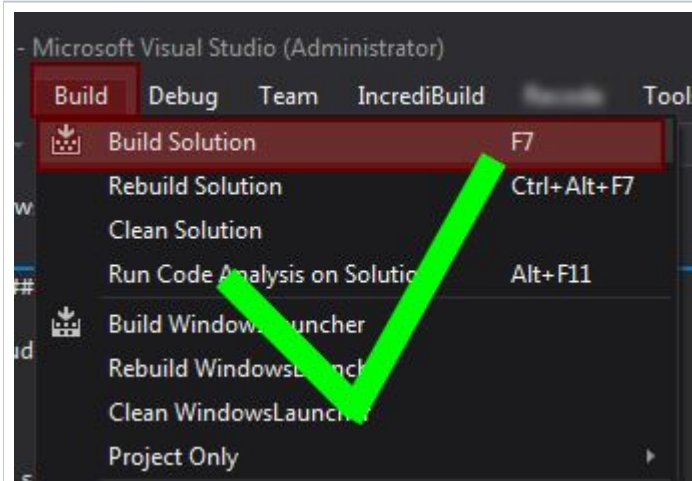


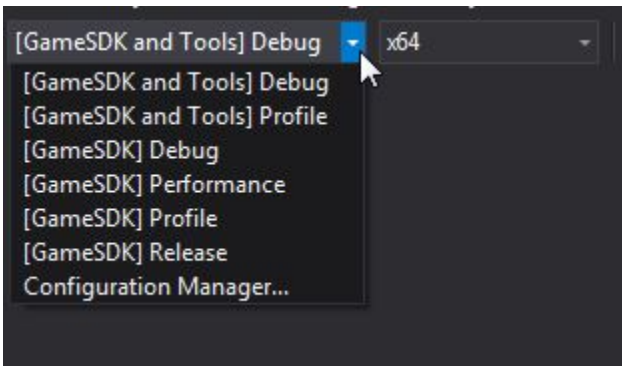
<under construction>

### Build Application:



Don't use IncrediBuild build option.  
WAF will execute IncrediBuild internally if needed.

### Select Build Spec:

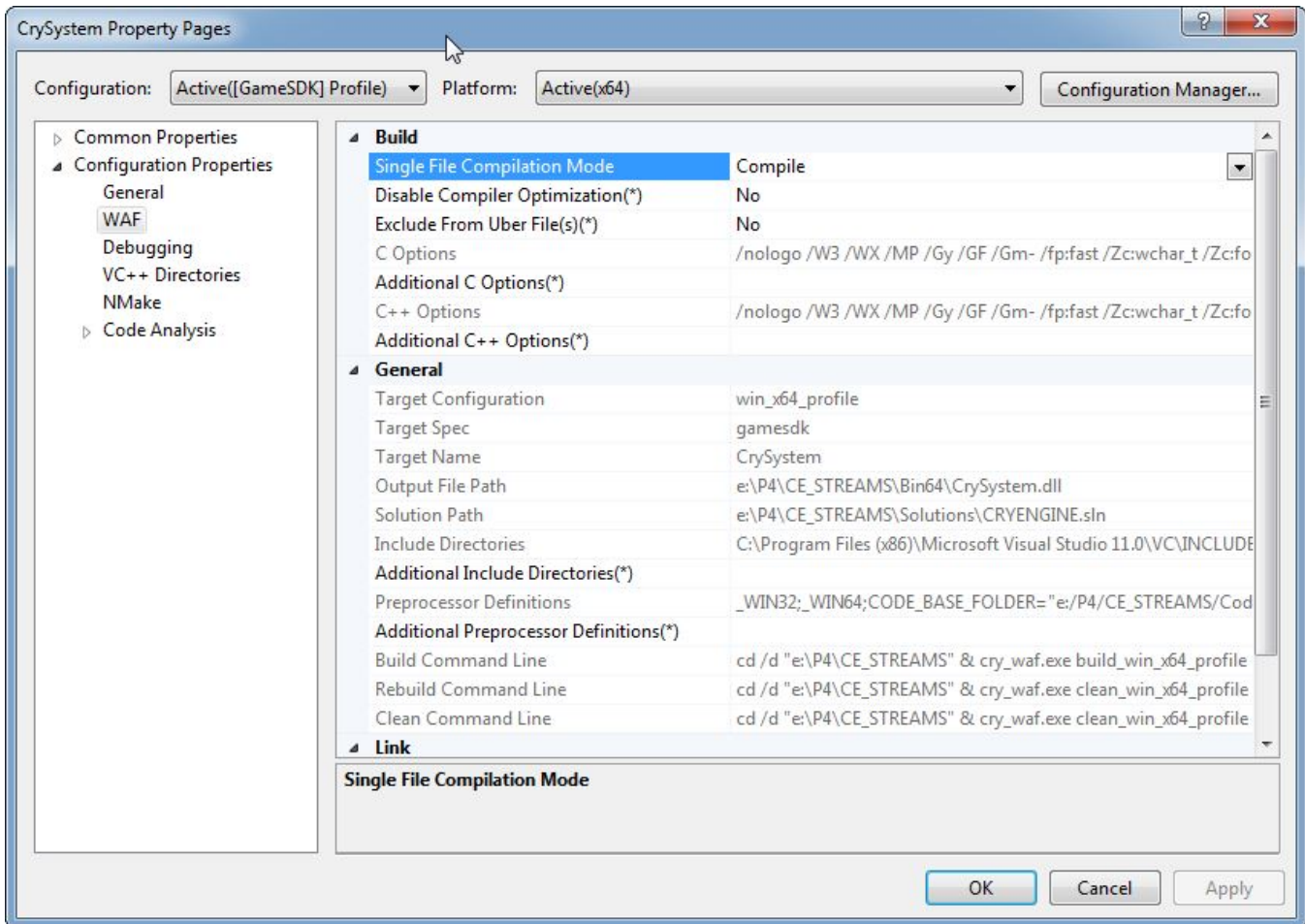
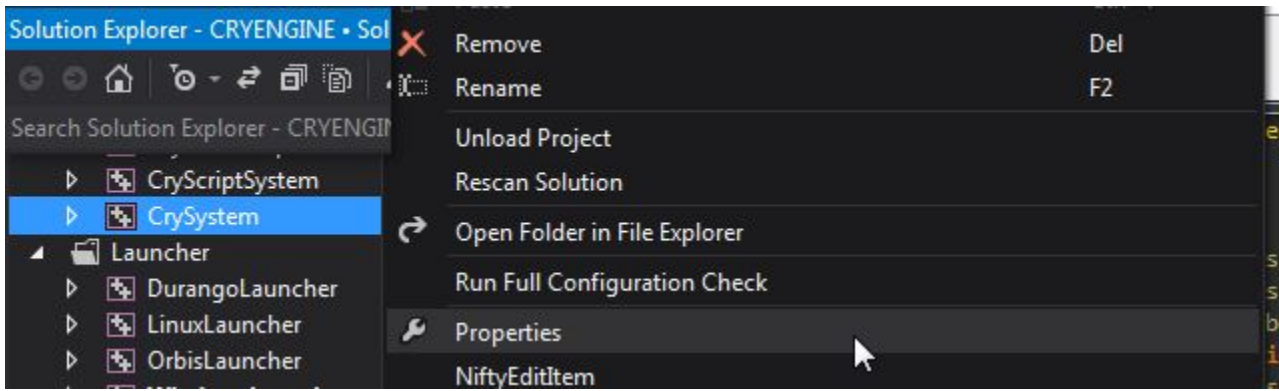


Ensure correct project is selected as "Startup Project".



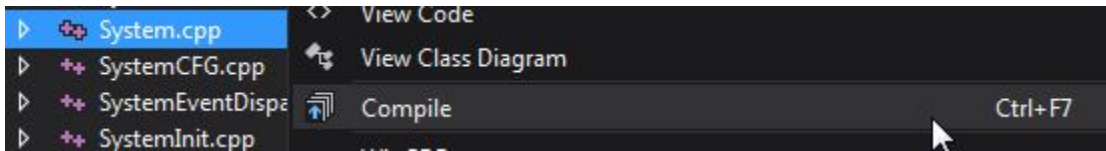
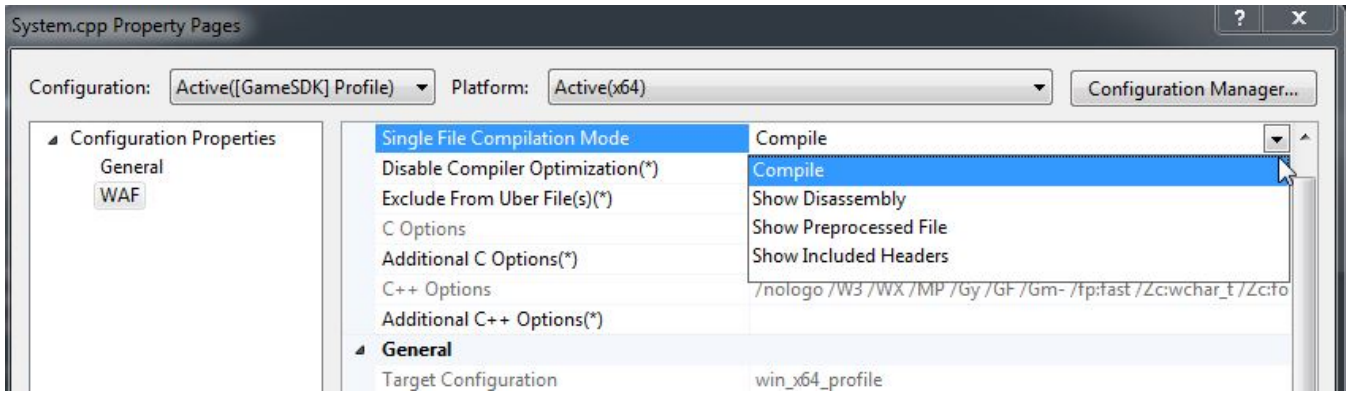
### WAF Property Page:

Per project or per files configurable WAF override options.



**Note:** Options are not stored across project regenerations!

### Single Files Compilation Modes:



### Extracting WAF command:

Could copy and past into command console to be executed on other machine.

